



Nyange Integrated Consultants Limited

Hospitality Projects

Nyange Integrated Consultants Ltd offers specialized Quantity Surveying and Project Management services for the hospitality sector — including hotels, lodges, resorts, and serviced apartments. We recognize that hospitality projects must not only function well but also elevate guest experiences through detail, design, and ambience.

Our team brings expertise in managing complex build environments, coordinating with design consultants, and ensuring seamless integration of finishes, MEP services, and branding elements. With an eye on cost, quality, and guest appeal, we help our clients create memorable spaces that stand out in competitive markets

www.nyange.co.ke

Proposed Laaziri Villas Resort Kajiado County

CLIENT: LAAZIRI VILLAS RESORT	
Project Value:	KES 96 Million
Scope of Services:	Quantity Surveying
Project Type:	Hospitality
Project Status:	Phase 1 Completed
COLLABORATIVE CONSULTANTS	
Architect:	
Structural Engineers:	
Services Engineer:	
Brief Description:	Hotel development on 10 acres featuring one- and two-bedroom lodge-style units, a central block housing the reception, offices, dining area, and back-of-house facilities such as laundry and staff changing rooms, along with a swimming pool and pool house – completed in 2024.



Proposed Tuala Resort in Oloosirkon, Kajiado County

CLIENT: NME LIMITED

Project Value:	KES 220 Million
Scope of Services:	Quantity Surveying
Project Type:	Hospitality
Project Status:	Ongoing

COLLABORATIVE CONSULTANTS

Architect:	Locus Studio Limited
Structural Engineers:	Structech Design Limited
Services Engineer:	Vellateck Integrated Systems Limited
Brief Description:	Hotel development on 5 acres comprising 40 standard rooms and one- and two-bedroom lodges, complemented by common facilities including a swimming pool, dining area, office spaces, and back-of-house amenities – completed in 2022.



Proposed Hotel Development in Mtwapa, Kilifi County

CLIENT: MAWENZI LIMITED

Project Value:	KES 45 Million
Scope of Services:	Quantity Surveying
Project Type:	Hospitality
Project Status:	Completed

COLLABORATIVE CONSULTANTS

Architect:	Locus Studio Limited
Structural Engineers:	Motech Design Solutions
Services Engineer:	Aspire Associates Limited
Brief Description:	Hotel development on 2 acres featuring 25 standard rooms, along with common facilities such as a swimming pool, dining area, external restaurant, office spaces, and back-of-house amenities – completed in 2022.



Proposed Conference at Travellers Beach Hotel, Nyali Mombasa

CLIENT: TRAVELLERS BEACH HOTEL

Project Value:	KES 40 Million
Scope of Services:	Quantity Surveying
Project Type:	Hospitality
Project Status:	Completed

COLLABORATIVE CONSULTANTS

Architect:	Locus Studio Limited
Service Engineers:	
Structural Engineers:	Coast Engineering Consultants
Brief Description:	Conferencing facilities for the hotel development with break out area, corresponding restrooms



Proposed Mito Andei Health Centre

CLIENT: KENYA RAILWAYS COOPERATION	
Project Value:	KES 300 Million
Scope of Services:	Quantity Surveying
Project Type:	Hospitality
Project Status:	Completed
COLLABORATIVE CONSULTANTS	
Architect:	Edon Consultants International
Structural Engineers:	Matrix Engineering Consultants
Services Engineer:	Feradon Consulting Engineers Limited
Main Contractor:	Apotach Technologies Limited
Brief Description:	Contract management for the main contractor of a 30-bed hospital, including an outpatient department, theatre, maternal and child health facility, 15-person morgue, and 15 two-bedroom staff houses.



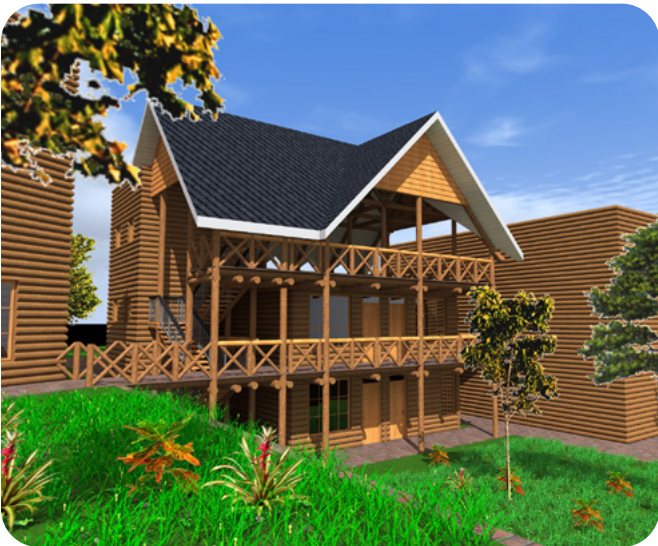
Proposed Hotel in Kumpa, Kajiado County

CLIENT: LERRUAT LOG RESORT

Project Value:	KES 600 Million
Scope of Services:	Quantity Surveying and Project Management
Project Type:	Hospitality
Project Status:	Completed (2020)

COLLABORATIVE CONSULTANTS

Architect:	Locus Studio Limited
Structural Engineers:	Mankan Consulting Engineers
Services Engineer:	Varsitech Consulting Engineers
Main Contractor:	Three N International Limited
Brief Description:	The resort blends modern amenities with rustic, nature-integrated aesthetic. Nyange Integrated Consultants Limited delivered full Quantity Surveying and Project Management services, ensuring cost efficiency, smooth coordination among consultants and on time delivery of this iconic leisure destination.



Proposed Hotel Development in Nairobi West, Nairobi County

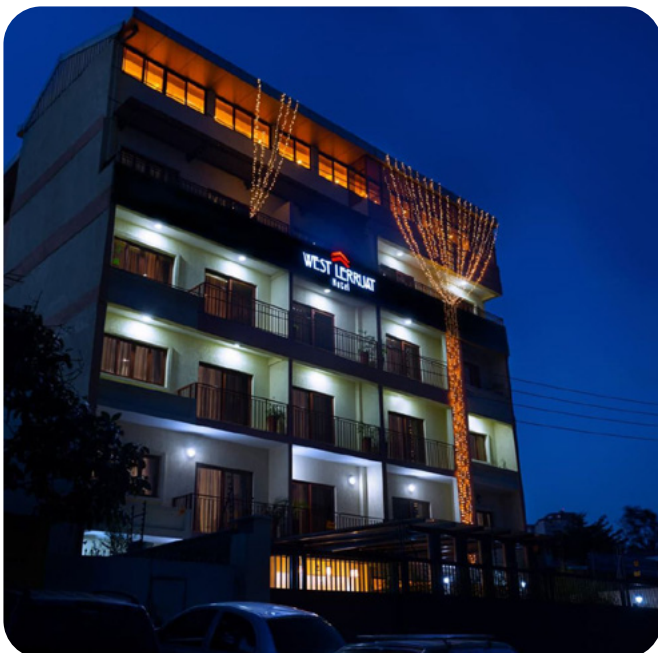
Situated in the bustling Nairobi West, West Lerruat Hotel is a modern mid rise hospitality development catering to urban travelers. The hotel features elegantly finished guest rooms, rooftop dining and grand welcoming reception. Nyange Integrated Consultants Limited oversaw both Quantity Surveying and Project Management, balancing design vision with cost discipline, ensuring timely delivery in a very highly active city environment.

CLIENT: LERRUAT WEST RESORT

Project Value:	KES 200 Million
Scope of Services:	Quantity Surveying and Project Management
Project Type:	Hospitality
Project Status:	Completed (2022)

COLLABORATIVE CONSULTANTS

Architect:	Locus Studio Limited
Structural Engineers:	Mankan Consulting Engineers
Services Engineer:	Varsitech Consulting Engineers
Main Contractor:	Three N International Limited





HEAD OFFICE (MOMBASA)



+254 713 257 511
+254 733 257 511



2nd Floor, Apartment No. 6 Ganjoni
Building, Corner Mnazi Mmoja and
Sauti ya Kenya Roads Opposite
CFAO Mobility (formerly DT Dobie)



info@nyange.co.ke
www.nyange.co.ke

BRANCH OFFICE (NAIROBI)



+254 797 106 126



Delight Apartments, Block D, GF-8,
Diani Road, Off Ole Odume Road,
Nairobi



nrb@nyange.co.ke